



HIKMICRO

Handheld Thermal Camera

Release Notes

1 Introduction

This document outlines the firmware changes of Thermal Camera in accordance with the requirements in EN 18031. The illustrations are from some devices as examples.

2 Version Updates

2.1 Network Access Should be Enabled by Users

In the previous firmware versions, network access is enabled by default. From this version on, users need to enable the function when network access (connecting to HIKMICRO Viewer APP and HIKMICRO Analyzer PC client if supported) is required

Path: *Connections > Network Access*.

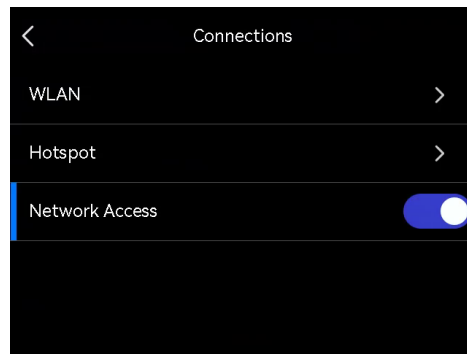


Figure 2-1 Pocket Camera Interface

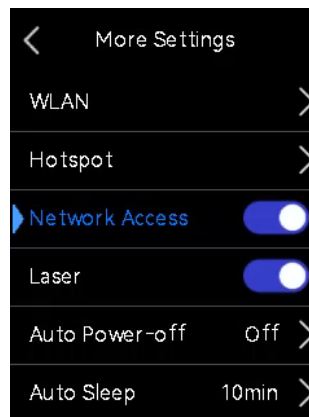


Figure 2-2 Thermal Camera Interface

2.2 Screen Lock is Available

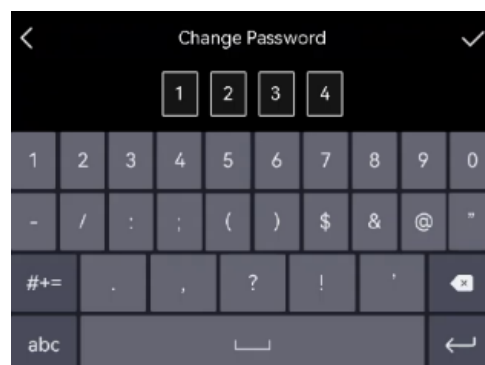
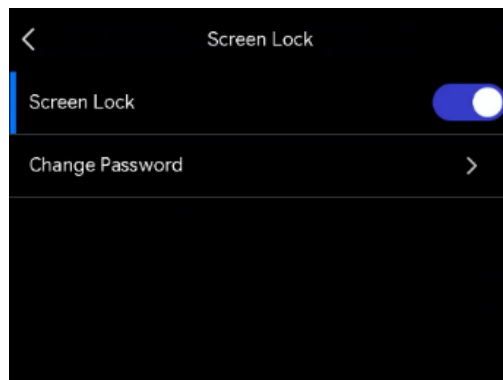
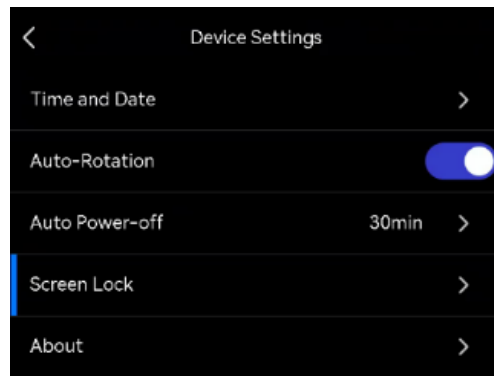
When enabled, users can configure and modify a 4-digit screen lock password (number only). The password must be entered every time the device starts up or wakes from sleep mode.

If the password is forgotten, it can be reset, but this action will erase all stored data and user configurations. Proceed with caution.

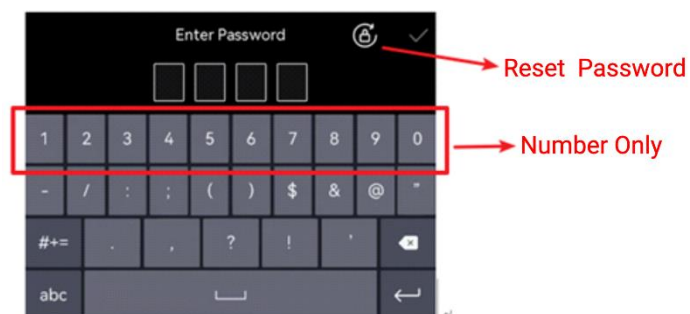
2.2.1 Pocket Camera

- **Set Password**

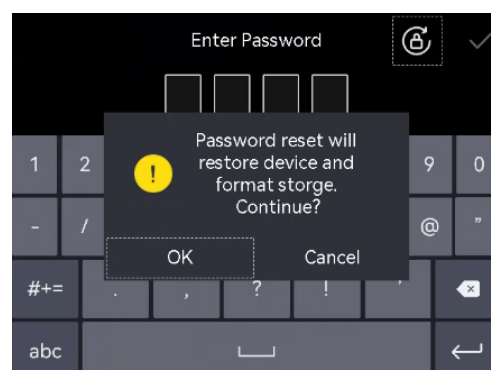
Path: *Device Settings > Screen Lock > Change Password*



- **Log in**



- **Reset Password**



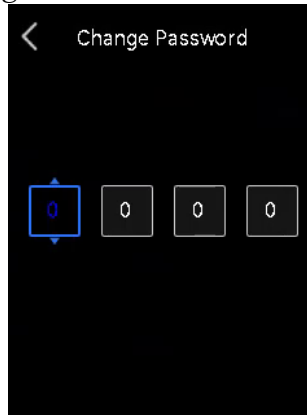
NOTE

Device storage media cannot be accessed via PC when the device is charged via a USB cable in power-off state, or the device is in locked state.

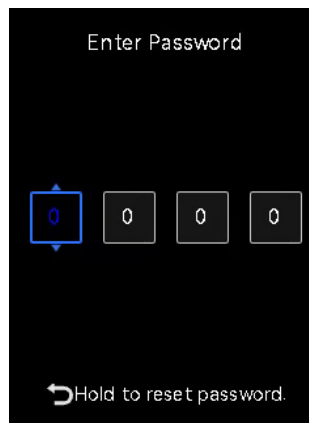
2.2.2

Thermal Camera

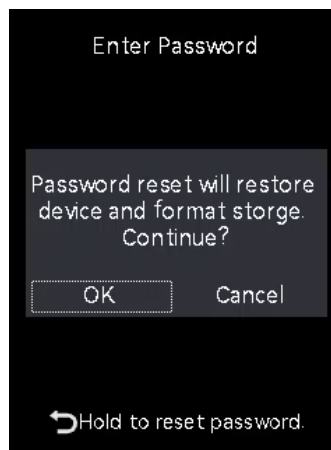
- **Set Password:** *Device Settings > More > Screen Lock.*



- **Log in**



- **Reset Password**



NOTE

Device storage media cannot be accessed via PC when the device is charged via a USB cable in power-off state, or the device is in locked state.

2.3

Check EN 18031 Version

Added EN 18031 compliance information in **About**.

About	
Module	V1.0.7.0 build241129
Serial No.	818007180
IP Address	10.22.139.180
Open Source Statement	>
EN 18031	Product Security Redline V4

Figure 2-3 EN 18031 Version for Pocket Camera

About	
Firmware	>
Serial No.	129065640
IP Address	10.22.139.188
Open Source Statement	>
Storage	13.20GB/13.20GB
EN 18031	>

Figure 2-4 EN 18031 Version for Thermal Camera

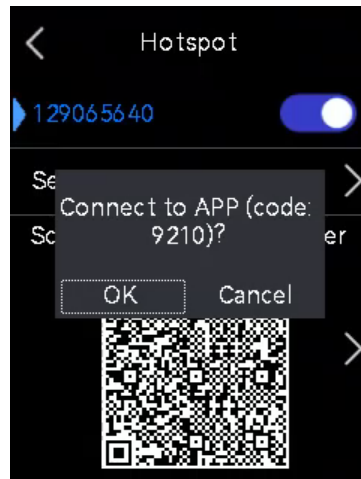
2.4 Connection Authentication

1. **Activation Confirmation:** Users must confirm activation on the device during initial client-device pairing.



2. **Connection Authentication:** Connection authentication is required during Wi-Fi and hotspot connection. A 4-digit numeric verification code is displayed on the pop-up

window for device connection authentication. The default option is **OK**; and users can **Cancel** the connection.





HIKMICRO

See the World in a New Way